



"THE PLAINS EXPRESS"

SHARING ♦ LEARNING ♦ CARING

Term 3 Week 10 - 22 September 2020

A member of the Armidale
Community of Schools



Education
Public Schools

From the Principal's Desk

FAREWELL MRS McCATHIE

A big thank you to Mrs McCathie for all your expertise in assisting our students and their learning. Have a wonderful rest of the year and in the summer days ahead.

CONCERNS OR QUESTIONS

Thank you to all our parents and I do enjoy our time welcoming you to school each day. There will be some times when I will need to use this time with my teachers and colleagues in the playground or in my office to support student learning or complete administrative requirements.

If you wish to speak to one of the teachers, please phone or email the school to leave a message for the appropriate person to return your call. We can set up a meeting time then if required.

There have been some concerns around lunchtimes when it is very cold and wet. If the weather is very unpleasant, we bring the children inside to ensure they are kept healthy and safe. The students are offered a variety of activities such as reading, games and they will sometimes be able to watch a movie. We appreciate your understanding of this situation, as the health and safety of the children is our priority. This situation could also take place in summer in extremely hot weather.

As part of our COVID-19 health and safety procedures, we have been promoting hand washing on a regular basis. The school bell is being rung five minutes before school

and at each break to enable the children to wash their hands with soap and water. We use hand sanitiser in conjunction with this practice, as we have been advised in the Department's guidelines that soap is the best method to lift dirt and germs.

We wish you all a happy and safe break, and look forward to seeing students back at school on Monday 12 October for a busy Term 4!

MEET GEORGIA THE POSSUM

Mrs Barker, a teacher who visits Jaxon at our school, is also very involved with WIRES. Last week when she visited, she brought along her two baby rescue possums. Jaxon was very excited to be able to hold Georgia the baby possum.



Kelly's Plains School Road, ARMIDALE NSW 2350
Phone: 6775 1253 Fax: 6775 1365
After Hours: 0436 931 457
email: kellysplan-p.school@det.nsw.edu.au
Website: www.kellysplan-p.schools.nsw.gov.au

Available on the
App Store

Get it on
Google play



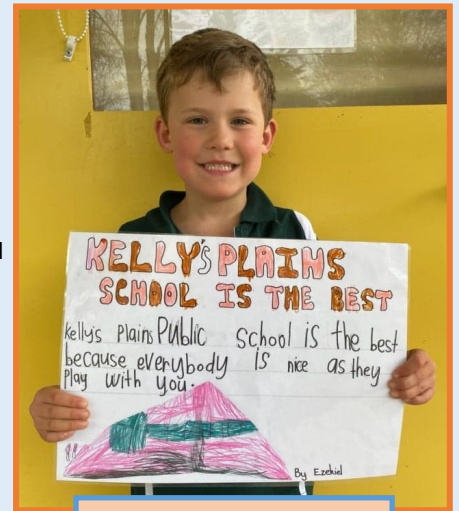
Lower Division News

Lower Division have had a very busy term 3!

The students continue to enjoy learning new concepts and are always open to exploring new ideas and experiences.

In Literacy, students have been learning about and writing persuasive texts. There has been a strong emphasis on using high modality words to enhance students' writing to persuade the audience. We have been focusing on expressing our ideas. Students particularly enjoyed writing a convincing sentence about why Kelly's Plains is the best school.

influence
action go
results
help sell
written
convince
write
remember
argue
debate
persuade
connect



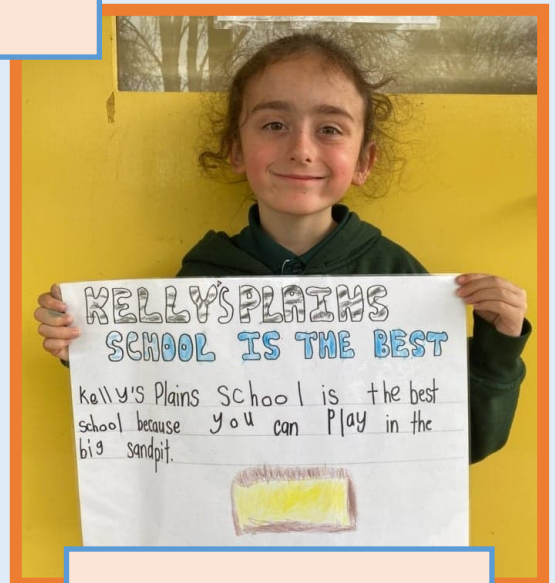
Kelly's Plains Public School is the best because everybody is nice as they play with you. Ezekiel



Kelly's Plains Public School is the best school because the teachers help you when you are stuck or when you need help with a maths problem. Hugo



Friends play with you every day, you can play with different age friends, friends help you with your work. That is why you must come to Kelly's Plains and join the fun. Oliver



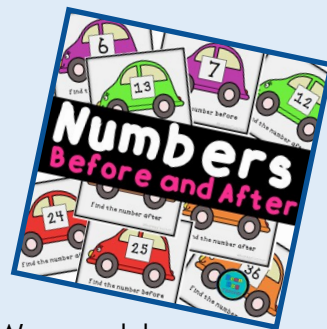
Kelly's Plains School is the best school because you can play in the big sandpit.

Morgan

All students have been working extremely hard during our Mathematics groups. We have been focusing on numbers before and after, and demonstrating different ways to represent numbers.



Mrs McCathie has been teaching a MAPPEN unit about 'Sustainability'. The students have become more aware of their environment and surroundings. We would like to thank Mrs McCathie for all of her hard work this term and we wish her all the best for her future endeavours.



Thank you Sally for assisting in Lower Division this term. We are looking forward to another busy term to wrap up the school year. Have a happy and safe holiday!



Congratulations
to our Stars
Oliver and Makenzie

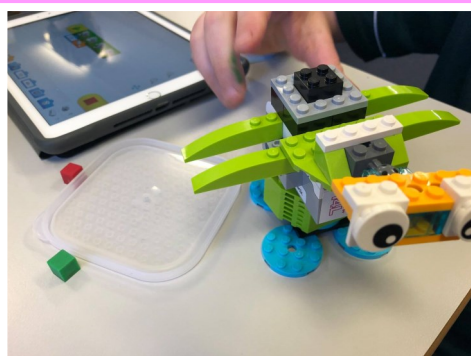
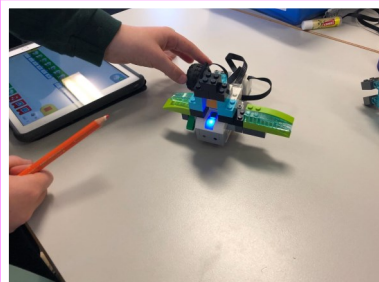
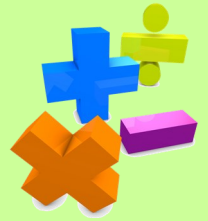


Upper Division Learning

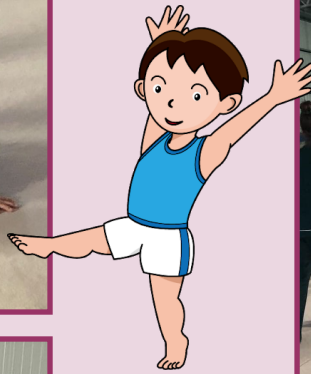


In the Upper Division this Term we have been focusing on how to form and utilise paragraphs. This has included beginning with a topic sentence and ensuring each paragraph is focused on one key idea. Students have then been applying this to informative types of text around their favourite animals.

In Mathematics as well as the key areas of addition, subtraction, multiplication and division students have been engaging with measurements and conversions of measurement. This has included the flights of paper planes and the distances within our playground using trundle wheels. Fantastic work this term by all students has ensured that the holiday break has been very well earned.



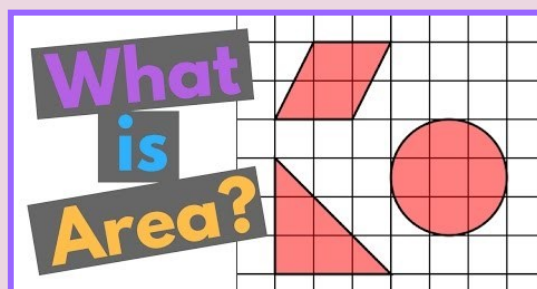
Fun activities in Term 3!



Gymnastics



LOWER DIVISION MATHS ACTIVITIES





Kelly's Plains Public School Positive Behaviour For Learning



Positive Behaviour for Learning

To keep our students mindful of the rules and thus to keep our school a peaceful place where everyone can learn, we do the following things when teaching:

- We teach and refer to our school-wide expectations frequently in the course of our classroom teaching program
- We provide students with opportunities to succeed by pre-correcting and offering praise first for accomplishing new tasks, following rules and meeting school-wide expectations. Correction only occurs where problem behaviour persists.
- We talk to students with respect using a positive voice tone.
- We actively engage everyone in the class during instruction.
- We use pre-correcting, prompting, positive reinforcement and redirection as we teach.
- We look for the positive first, and provide immediate, frequent, specific and positive feedback.



Kelly's Plains Public School Positive Behaviour For Learning



Positive reinforcement and rewards

We use a dual system of rewards in relation to encouraging positive behaviour in all students.

1. Positive reinforcement. Teachers issue 'tickets' to reinforce knowledge and successful practice of rules. These will be frequent and tangible rewards, issued with specific verbal praise, to students who are successfully following the rules. These tickets will be placed into a class draw each week. Two winners will be drawn out each week from each class and these students will be able to choose a small reward from the rewards box. Whole school rewards will be used to reinforce positive behaviour.
2. Personal acknowledgement of consistent positive behaviour and citizenship. This award is in the form of a small token called a 'Gotcha!' (doing good things!) which teachers will issue to acknowledge and show appreciation for exemplary personal behaviour. When a student has collected 20 'Gotcha!' (doing good things!) they will be issued a Bronze certificate and medallion. After collecting 40 'Gotcha!' (doing good things!) students will earn a Silver certificate and medallion. After collecting 60 'Gotcha!' (doing good things!) students will earn a Gold certificate and medallion and the school will pay for their P&C Lunch. The 'Gotcha!' tokens will be collected by the students, put into a personal journal and maintained as a record of the positive behaviours they have demonstrated throughout their year/s at school.



Kelly's Plains Public School Positive Behaviour For Learning



Problem behaviours

Problem behaviours are regarded as learning errors. In the event that a student has demonstrated inappropriate behaviour, teachers will support improvement through re-teaching, pre-correction and corrective feedback where necessary. Where a student fails to respond to teaching and positive reinforcement or to teacher pre-correction or verbal correction and chooses to continue their problem behaviour, we implement a school-wide system of consequences.

Consequences for problem behaviours in the classroom

Classroom teachers set clear expectations of their class with a positive and engaging learning environment. Students are expected to follow these guidelines as set by the classroom teacher. If serious behaviours continue a meeting will be arranged with parents and the teacher to address these concerns. These could also include myself as the principal and Learning and Support Team.

Consequences for problem behaviours in the playground

In the playground, disruption of others' play or engaging in unsafe play will be appropriately dealt with by the teacher on duty. This will include:

- Students who engage in bullying; in disrespectful language to staff, students or community; who refuse to follow staff instructions; or whose behaviour renders another child unsafe or hurt will be removed to a safe place in the playground under the teacher's supervision.
- Any serious incident will be dealt with by the teacher on duty with the principal, or relieving principal, in accordance with Department of Education guidelines and policies.



Kelly's Plains Public School Positive Behaviour For Learning



Recording and reporting to parents

Our school uses a form of recording of student information called a 'Support Planner'. This allows staff to record observations of student behaviour and to plan appropriate support and intervention where a student's pattern of behaviour becomes of concern. Observations of concern are recorded onto the Support Planner. Information is provided to all staff on a weekly basis. This will allow class teachers to provide support through conferencing, pre-correction and re-teaching to children in their class who are having difficulties in staying on task, being respectful or keeping themselves and others safe. Parents will be kept informed of staff concerns by means of meetings with staff, letters and phone calls. The occurrence of three or more incidents in two weeks for any child will result in a letter home to advise parents that staff are concerned about a developing pattern of problem behaviour.

To support all students to make good choices we aim to respectfully teach the expected behaviour using positive, clear and specific language.

Blue Slips - If a student is requiring extra support to make good choices, verbal reminders are given. It is important students are made aware of their behaviour and through discussion reminded of appropriate behaviour choices. If the behaviour continues, a *Reflection Sheet* is completed in the classroom or a *Walk with Me* or *Sit Out for 10 Minutes* strategy is given by the supervising teacher in the playground. This provides time for the student to reflect and be redirected to make good choices. If there is a further incident during that same session a Blue Slip is issued. The Blue Slip provides an opportunity for the classroom teacher to have an individual conversation with the student to discuss the behaviour then provide strategies and support.

ARMIDALE DISTRICT CRICKET ASSOCIATION
INVITES YOU TO

PLAY CRICKET THIS SUMMER ... HOWZAT?!!

OFFICIAL SEASON LAUNCH

SATURDAY 17 OCTOBER 2020
9AM - 12NOON
ARMIDALE SPORTSGROUND

- ENJOY CRICKET ACTIVITIES & BBQ
- VIEW THE NEW TRAINING FACILITY
- MEET SPONSORS & CLUB REPRESENTATIVES:
ARMIDALE CITY/UNE
CSC
EASTS
EX-SERVICES
GUYRA
HILLGROVE
TAS
URALLA/WALCHA

JUNIOR COMPETITION STARTS
SATURDAY 24 OCTOBER 2020

REGISTER ON MYCRICKET OR
AT THE GROUND FOR A CHANCE TO WIN A
\$100 ARMIDALE SPORTSPOWER VOUCHER!

REMEMBER TO USE YOUR ACTIVE KIDS
VOUCHER!

CONTACT:
secretary@armidalecricket.com.au
www.armidalecricket.com.au
Facebook & Instagram



COME AND TRY ATHLETICS...



The 2020/21 season is coming
for athletes young and old, big
and small, beginners and pros.
WE WANT YOU ALL!

Season Starts
Wednesday 14th October

Register Here:

u/6 - u/17s (Little Athletics):
<https://lansw.com.au/get-involved/how-to-register/>

u/12 to Masters register here:
<http://www.armidaleathletics.org.au/>



Or Not sure if Little Athletics is for
your family? Come along and find
out more at our come and try days:

-Wednesday 16th September
from 4:30pm

-Wednesday 23rd September
from 4:30pm

For more information find Armidale Athletics
or Armidale Little Athletics on Facebook



Interested in Basketball?

For information please contact Judy Monaghan
on 0417 622 859 or email at armball@bigpond.com



School holiday activities

Monday 28 September

Craft day - Upcycle materials into your new creation
11am & 3pm: Maximum 14 people per session



Wednesday 30 September & 7 October

Sand art

11am & 3pm: All ages welcome
Maximum 14 people per session

Friday 2 October

'Think like a rock' - UNE Science discovery workshop
5 - 12 years
11am & 3pm: Maximum 13 people per session

FREE fun for kids of all ages

Thursday 8 October

Feathers, Fur & Scales
Live animal streaming event
11am - all ages welcome



Bookings essential by scanning
the code or visiting
<https://event.webinarjam.com/register/85/gw285azv>

Bookings also required for other activities by
phoning the Library on 6770 3636

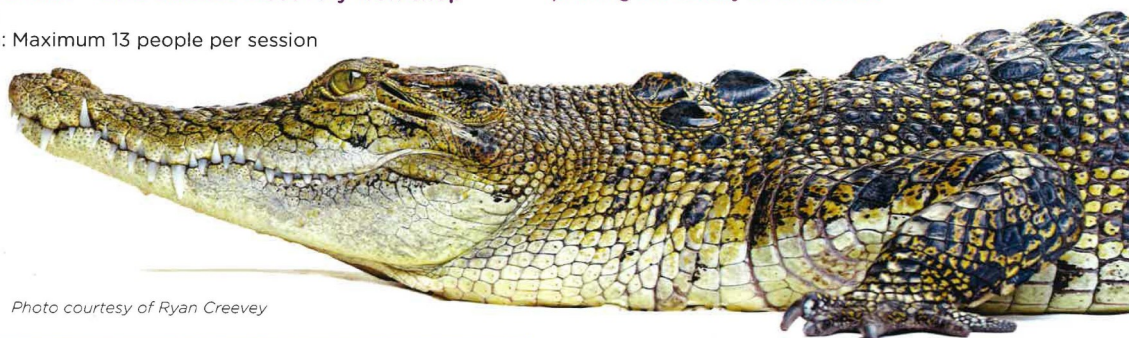


Photo courtesy of Ryan Creevey

ARMIDALE
Regional Libraries



Activities are held at the Armidale War Memorial Library,
182 Rusden St Armidale, 2350
www.armidaleregional.nsw.gov.au/library