



Kelly's Plains Public School Newsletter

Term 4 Week 9
2 Dec 2015

"SHARING LEARNING CARING"



School Website: www.kellysplan-p.schools.nsw.edu.au
Andrew Watson's email: andrew.watson@det.nsw.edu.au

A member of the Armidale
Community of Schools



Kelly's Plains School Road, ARMIDALE NSW 2350
Phone: 6775 1253 Fax : 6775 1365
After/Hours: 0457 539 031
Email: kellysplan-p.school@det.nsw.edu.au

Kelly's Plains Public School
Principal: Mr Andrew Watson (Rel)
Junior Division Teacher: Ms Lauren Piddington
Teacher: Mrs Jane Weier



What is happening at our School?

This week is an extremely important week for Kelly's Plains Public School. On Thursday we will be celebrating our Annual Presentation Day. This is a day where we will be celebrating the achievement of each of our students and announcing our future leaders for the school.

Don't forget our school play next Tuesday night. The night will start at 5:30pm. Please bring your chairs and picnic rugs to settle in for a great performance of Pirates versus Mermaids. What an 'arrrrrrrr' experience. After the performance the P&C will be providing all families with a Sausage Sizzle. Each family is asked to bring a Christmas dessert to share.

Next Thursday also sees a very important visitor coming. Santa will be surprising us on Thursday at 8:45am in the fire engine. The day will begin for all students wishing to see Santa at 8:30am and finishes at 2:30pm for our transition students. Secret Santa presents are due back by next Tuesday 8th December. Presents are to cost no more than \$5. We have been experiencing some very hot weather. This is a timely reminder of our No Hat, No Play policy. Please ensure all children have a broad brimmed school hat each day.

Next week we will be sending home a list of the book packs your children will require for next year (2016). These book packs will be available for purchase at Collins Booksellers (Armidale Central) in January, 2016

DATES FOR YOUR DIARY

December

- | | |
|-----------------|---|
| Thurs 3 | Presentation Day 9.45am |
| Fri 4 | P&C Lunch |
| Tues 8 | Evening performance of School Play
Followed by a BBQ dinner |
| Thurs 10 | Kindy Orientation Day whole day
Matinee performance of School play
Santa Claus visit and Secret Santa
This day starts at 8.30am |
| Tues 15 | Christmas Raffle to be drawn |



We will be running our annual
Christmas Hamper Raffle!

If you are able to contribute items towards the creation
of these wonderful Christmas hamper prizes,
your help will be greatly appreciated!

Please pass any items to Jayne Croft (0439784491) whenever you can.
Non-perishable items such as: crackers, dried fruits, nuts, popcorn, pretzels, jelly packets, chocolates, boxed meringues, gourmet sauces or toppings, candles, cordials, bon bons, patterned napkins etc...

(...anything that will grace a table throughout the
Christmas season basically!)

THANK YOU!

2015 Presentation Day



Date: Thursday 3 December 2015 on the front lawn.

Time: 9.45am

Bring the whole family along for this happy annual event

Morning Tea in the Cola to follow

Please donate a plate to share.

Students are to pack their own morning tea and will enjoy and leftovers after the event.

Kelly's Plains Christmas Raffle

MULTIPLE PRIZES TO BE WON!!!!

Three individual hams are up for grabs as well as lovely hampers.

\$2 per ticket or three for \$5

Tickets and money need to be handed into the office by
December 15.



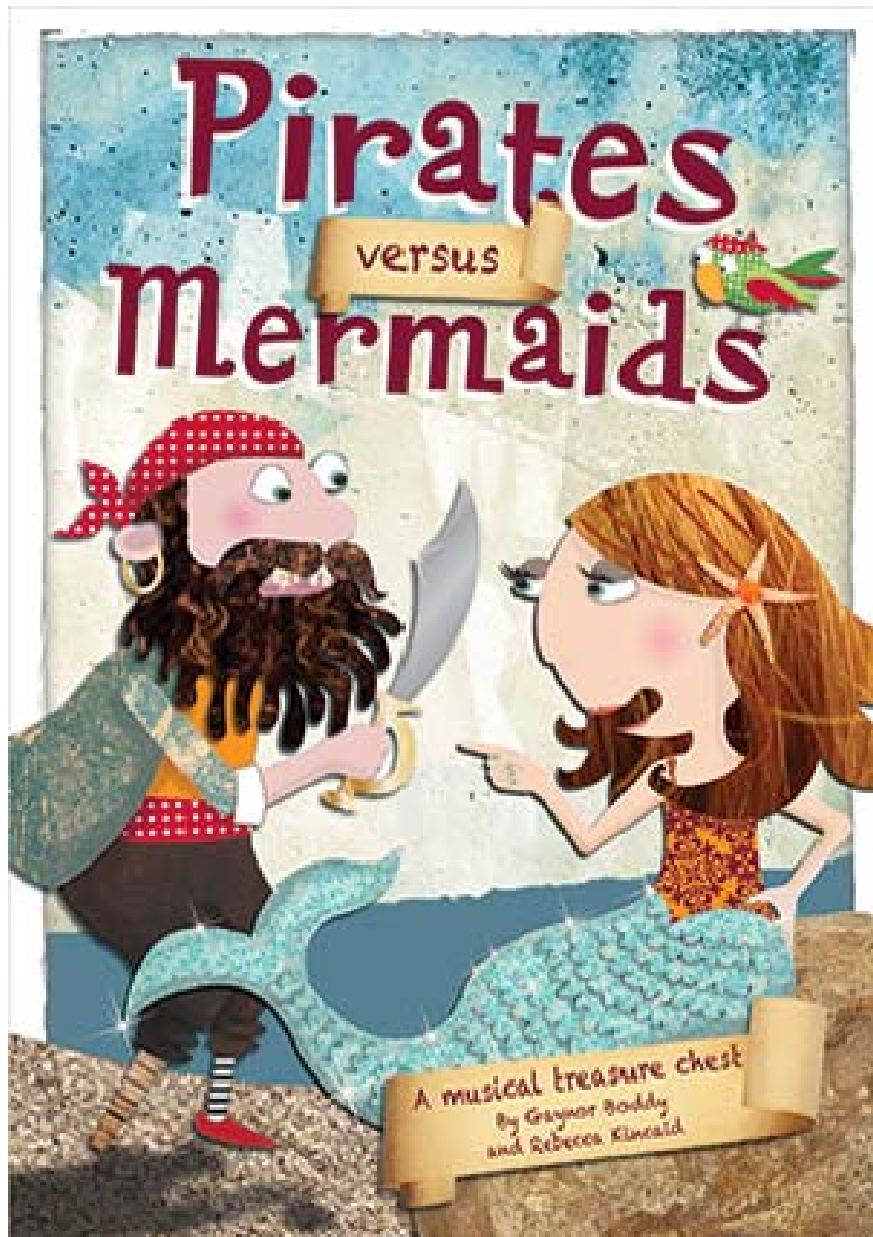
2016 Captain Speeches



8 wonderful leaders



ARRRRRRRRRR!!!!



Start Time: 5:30pm Tuesday 8th December

Where: Front Lawn

What to bring: Deck chairs/ picnic blankets. Please bring along a Christmas dessert to share. The P&C will be providing a Sausage Sizzle after the performance.



Calan

For getting along with his peers

Bronte

Super work in morning fitness

Prestyn

Being a caring friend

**School Lunch Roster
Term 4 2015**



Week 9 4/12
Alison Liddle 0418817756
Edwards Croft Lukes Mavin
Hot Dogs Home-made sausage rolls Jelly Cups

Fruit Juice Icy Poles for sale.
50 cents each



**Monday
Wednesday
Friday**

**Kelly's Plains Public School
Student Absence Note**

My child of class was absent from school

on the following dates

For the following reason

Parent/Carer Signature:

Date: